

CAYMAN ISLANDS.
CLEARLY BETTER BUSINESS.

CYBER RISK, PATIENT SAFETY & CAPTIVES

Wednesday
November 29, 2017
2:55pm – 3:45pm

1

<https://www.captive.com/resources/captive-insurance-calendar/cayman-captive-forum-2017>



PANELISTS

Cyber Risk, Patient Safety and Captives

Moderator

Bob Chaput, Clearwater Cyber Risk Services

Panelists

Mark Reynolds | President & CEO | Risk Management Foundation Harvard University

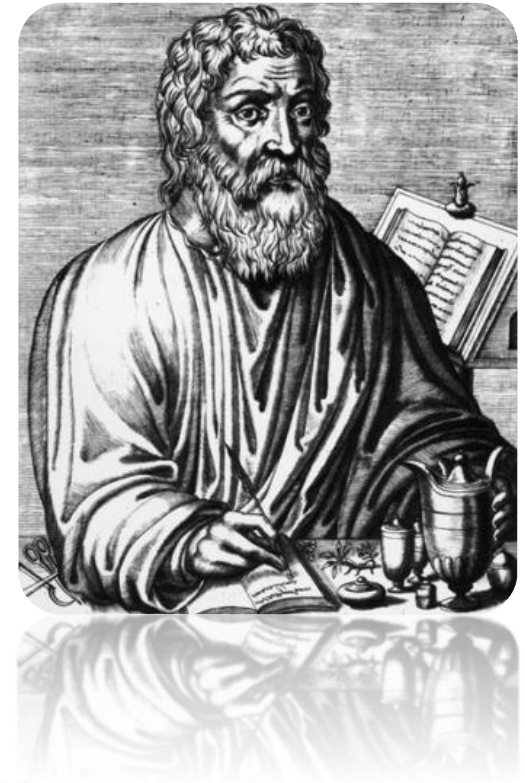
Chet Porembski | Deputy General Counsel | OhioHealth Corporation



FIRST HEALTHCARE RISK MANAGER

“First, Do No Harm.”

- Hippocrates, 4th Century, B.C.E.
- OR



**Digitization in Healthcare is Great ...
AND Now, We Can Create Harm from New
Threat Sources**

KEY THEMES

1. We must connect the dots between cyber risk and patient safety
2. We need to look beyond traditional IT assets to biomedical devices and the Internet of Things (IoT)
3. Identification of cyber exposures is a key requirement whether one has or is contemplating setting up a cyber line
4. Cyber risk management is an Enterprise Risk Management issue, not an IT Problem+



THE RISK PROBLEM WE'RE TRYING TO SOLVE

What if Sensitive Information is shared?

CONFIDENTIALITY

What if Sensitive Information is not complete, up-to-date and accurate?

INTEGRITY

What if Sensitive Information, Systems or Devices are not there when it is needed?

AVAILABILITY

ePHI,
Systems &
Devices

Don't
Compromise
C-I-A!

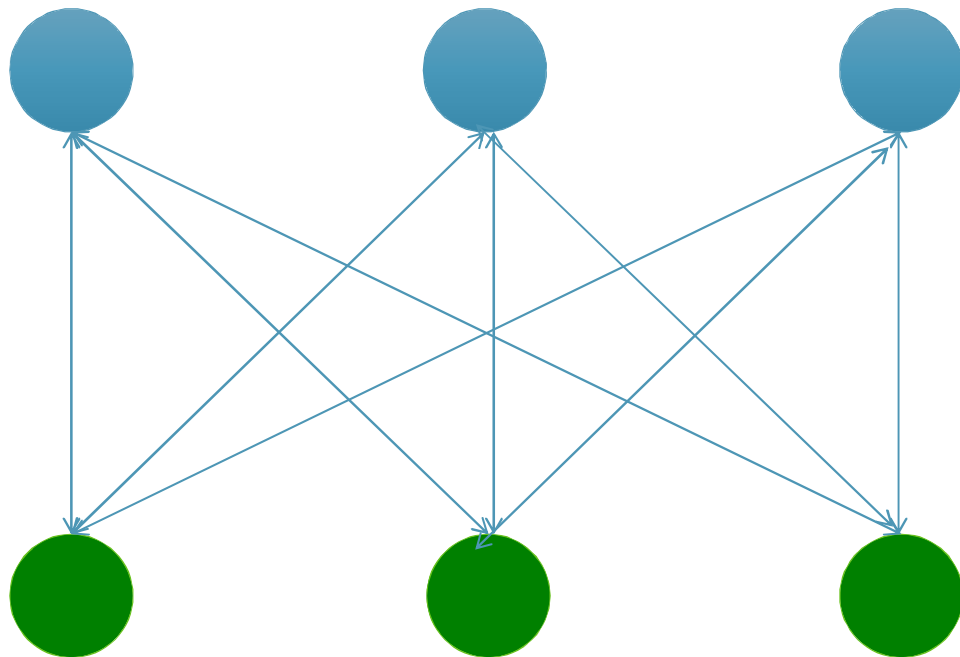
Single Biggest Issue: Risk Identification

CONNECT THE DOTS BETWEEN CYBER RISKS AND PATIENT SAFETY

Confidentiality

Integrity

Availability



Quality and Safe
Care

Access to
Care

Timely
Care



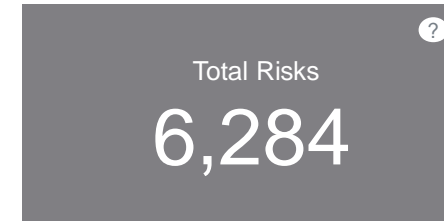
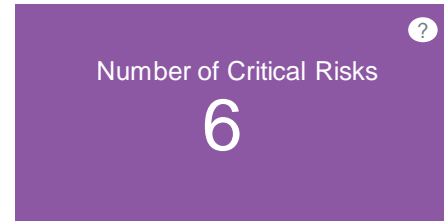
Patient Information AND Patient Health

Traditional IT Assets

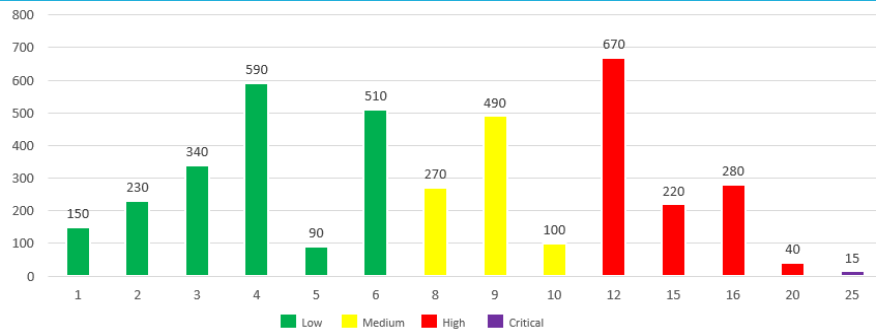
Biomedical Devices

Other IoT Devices

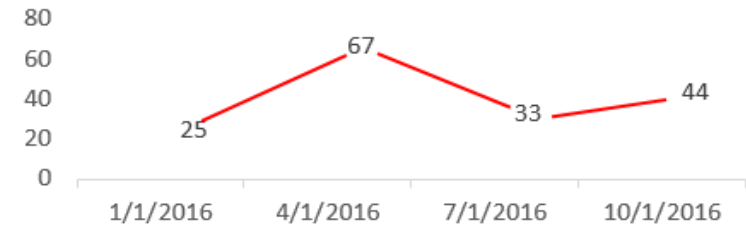




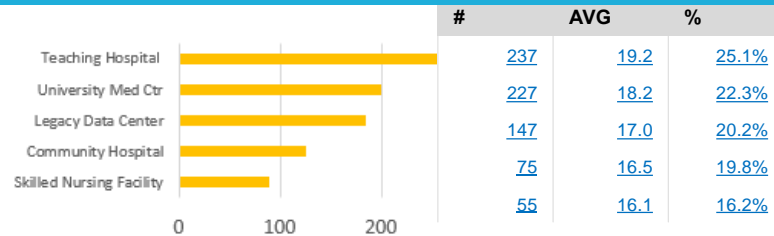
Distribution of Risks by Rating



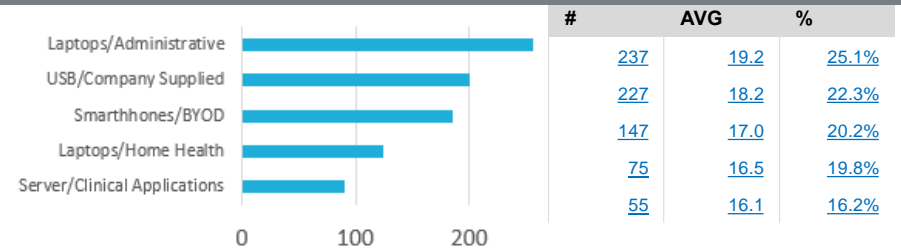
Number of Risks >= Threshold - History



Risks >= Threshold . Top 5 Entities/Locations



Risks >= Threshold - Top 5 Media/Asset Groups



QUESTIONS?

